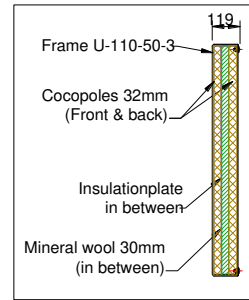


**Technical Specifications KOKOWALL DOUBLE ABSORPTION –A3 NOISE BARRIER**

**Dimensions and pattern Kokowall DOUBLE ABSORPTION –A3 NOISE BARRIER**

- Standard pattern (HEA upright):  $w_{\text{pattern, standard HEA}} = \text{panelwidth: } 3.960\text{mm (hoh. } 4.000\text{mm)}$ .
- Any other size smaller than 3,96 can be supplied
- Maximum height:  $h_{\text{max}} = 6$  metres starting from ground level (3 stacked panels)
- For a Kokowall Noise Barrier measuring higher than 2,20 metres (starting from the ground level) the height is divided into 2 or more stacked panels.

**Steel Construction, HEA uprights:**

- **Style of Foundation column:** Taking into account the barrier's height, windload and soilconditions as from min. HEA160 up to IPE300 (or HEA240) are applicable – S235 hot-dip galvanised EN ISO 1461, DIN 17100 quality standard. Headplate  $d=20\text{-}25\text{mm}$  with slots for bolts.
- **Style of upright:** Taking into account the barrier's height, as from min. HEA160 up to IPE300 (or HEA240) are applicable – S235 hot-dip galvanised EN ISO 1461, DIN 17100 quality standard., with pre drilled mounting holes, diameter 8 mm, Optional powder coating in any desired colour., Footplate  $d=15\text{-}25\text{mm}$  with  $90^\circ$  slots for bolts.
- Optional: Uprights coated with double layer powdercoating in standard RAL colour.

**Panels: Kokowall DA –A3 NOISE BARRIER**

- Framework made of cold-rolled U-110-50-3, profile S235, hot-dip galvanised EN ISO 1461 quality standard DIN 17100. Optional frame coated with double layer powdercoating in standard RAL colour.
- Sound insulation, single number descriptor reading - NEN-EN-ISO-717-1:  $R_w = 30\text{dB(a)}$  - NEN 1793-2, Category B3 ( $D_{1ra}=27\text{dB}$ ). Please see attachment TNO Sound Insulation reading.
- Sound Absorption, single number descriptor reading - NEN-EN-ISO-717-1:  $D_{1a}=10\text{dB(a)}$  - NEN 1793-1, Category **A3**. Please see attachment TNO Sound Absorption reading.
- At front and backside a row of Kokowall cocopoles: Kokowall:  $\varnothing 32\text{mm cocopoles } \pm 23 \text{ psc. / m}^1 / \text{side}$
- In between a layer of 40mm mineral wool and a plastisol steelplate 0,75mm,
- Mass of panels:  $23\text{-}30 \text{ kg/m}^2$  depending on size
- **Dimensions panels: Standard HEA**

|                                |   |                           |  |
|--------------------------------|---|---------------------------|--|
| Standard width panel           | : | $w_{\text{panel, stand}}$ | = 3.960  |
| Allowable placement tolerance: |   | $T_{\text{pl, panel}}$    | = 40 mm (in relation to $w_{\text{pattern}}$ ) |
| Maximum height panel:          |   | $h_{\text{panel, max}}$   | = 2.000 mm                                     |

**Concrete gravel boards:**

- Positioned under the panels for support and used for limited slopes. Enforced with 4 x concrete iron wire  $\varnothing 8\text{mm FeB500}$
- Dimensions Standard gravelboard  $2.960$  or  $3.960 \times 190 \times 90\text{mm}$  (can easily be cut with a grinder to desirable size)

**Joint materials:**

- Attachment panels, per item: 8 x self-tapping hexagon shoulder pin ST.6,3 x 38 mm - DIN 7405K
- Attachment uprights, per item: 4 x Bolt / Washer and Nut M16-M30 x 90 hexagon head hot dip galvanised, DIN 933 Quality 8.8

**Synthetic material:**

- Recycled fire-retardant ABS, pipes diameter  $\varnothing 32 \text{ mm}$ , wrapped in coconut fibres with UV- stabilised multifilament PP threads.
- Compriband cellular rubber, 15mm between stacked panels.

**Coconut:**

- Coconut fibres serve as a bonding substrate for several climbers' aerial roots.
- Treated with Sepulchre Firestop. Fireproofed according to NEN6065 Flame Spread Category 2.